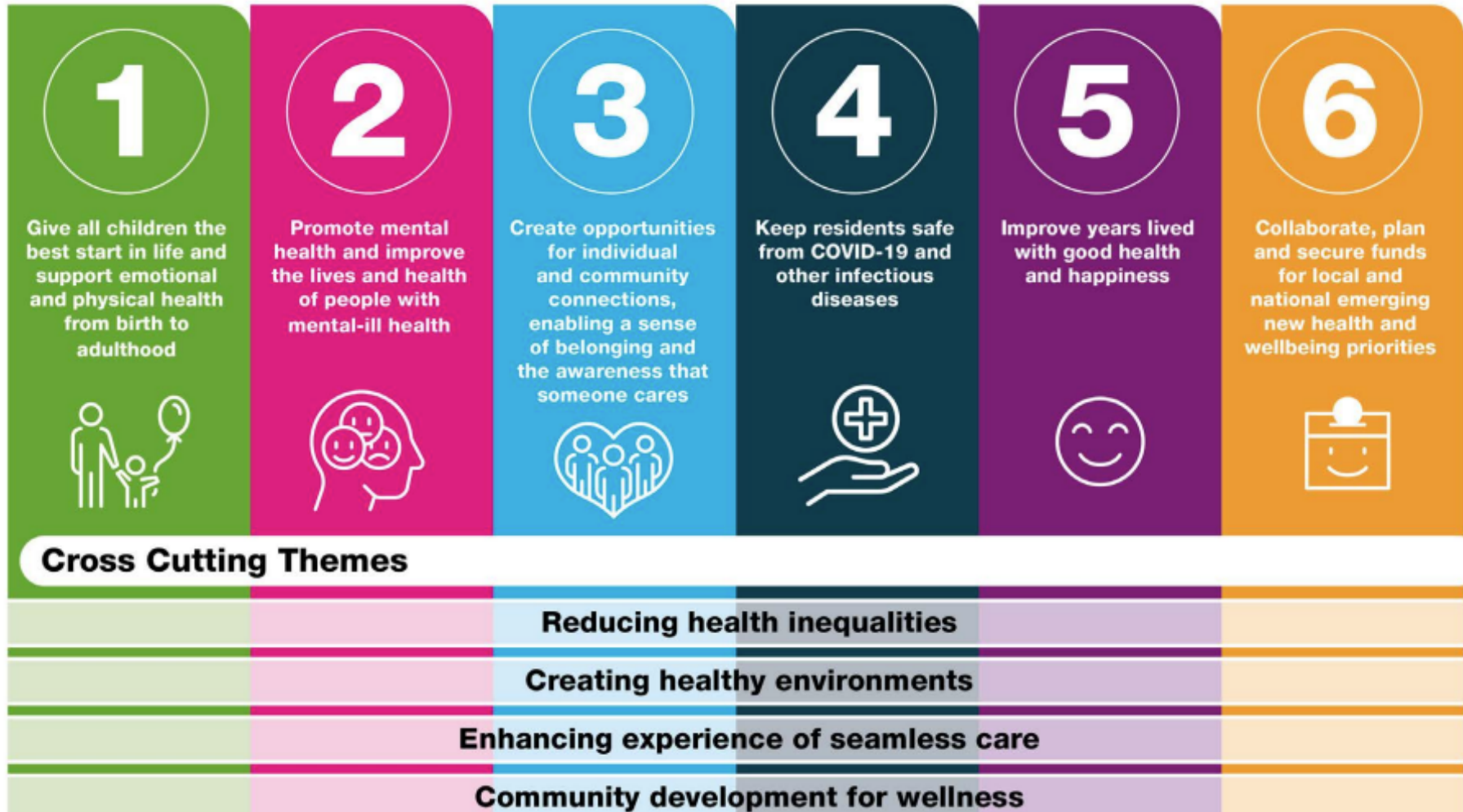


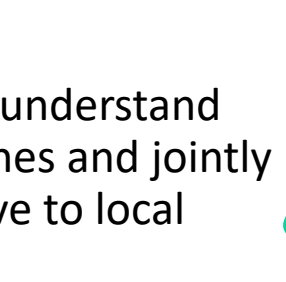
# Bracknell Forest self-harm workforce project

for the children and young people's  
workforce in Bracknell Forest  
Update

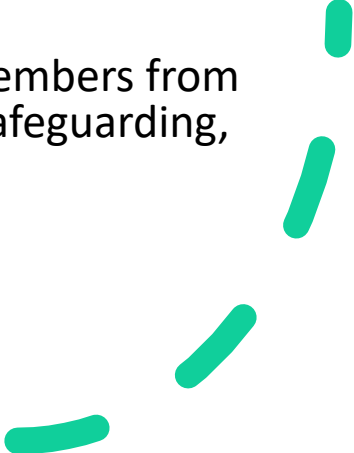
# HWB Strategy – Priority two



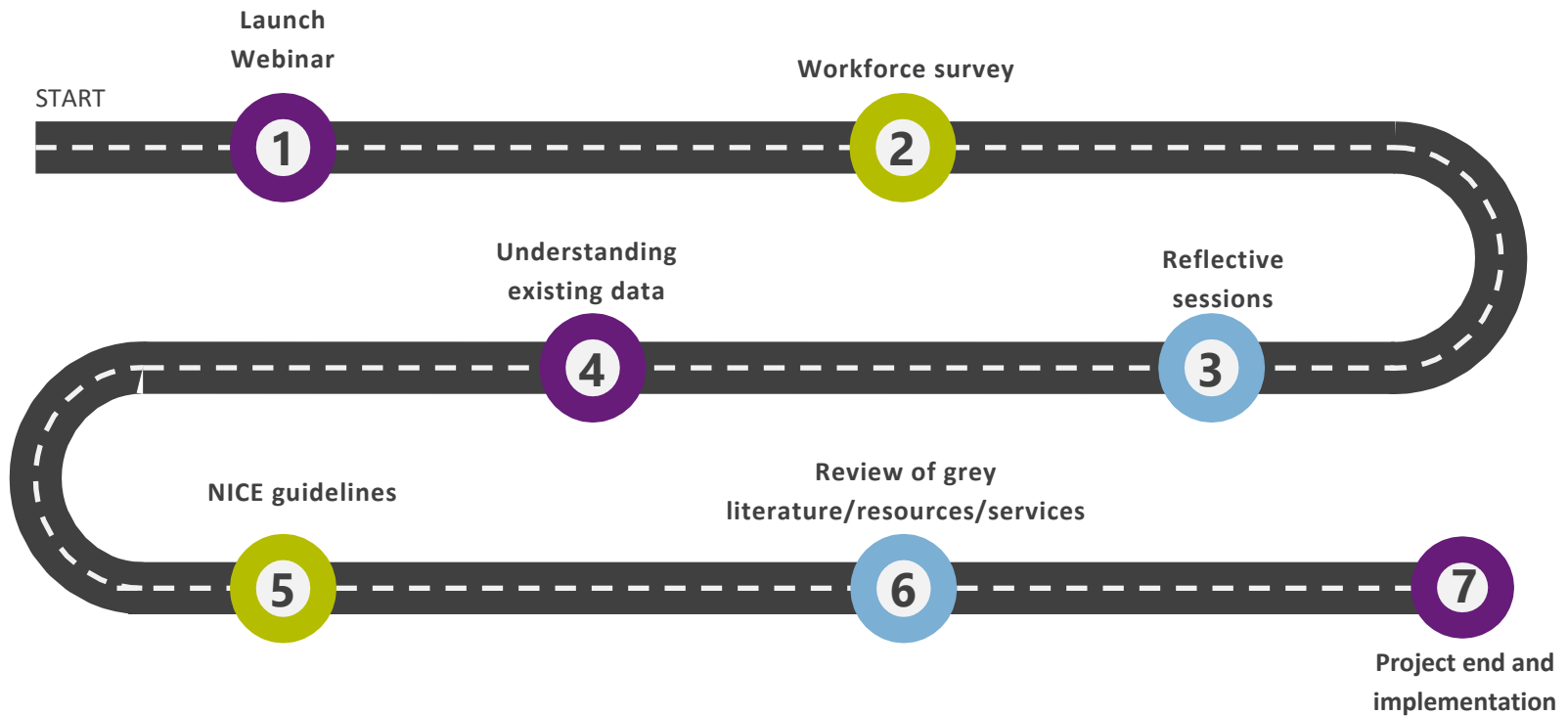
# Context

- Although people of all demographics self-harm, it is particularly common among adolescents
  - New NICE guidance on identifying and helping manage self-harm (published September 2022)
    - First update in over a decade
    - For the first time has advice for schools
  - Locally and beyond, training offers, resources and non-clinical services aiming to support young people who self-harm- are they making a difference?
  - Limited attention has been given to understand self-harm collectively across disciplines and jointly owning a solution which is responsive to local needs and preferences.
- 

# About the project

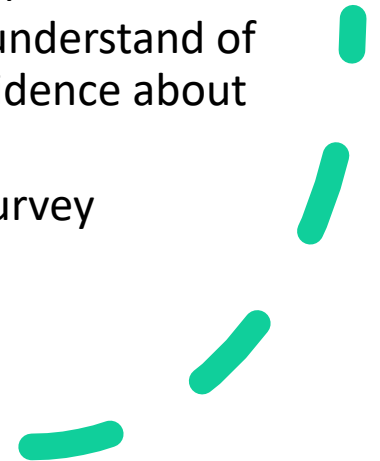
- Public Health team commissioned December 2022
  - Oxford Academic Health Science Network successful
  - Project aims to develop a holistic and place-based approach to enable professionals/volunteers to come together to better understand and respond to self-harm
  - The project is underpinned by the fact that understand and responding to self-harm require:
    - A collaborative approach involving multiple perspectives across the CYP workforce
    - A focus on earlier intervention
    - A cross discipline learning journey approach to develop skills and knowledge and build capacity
  - Project oversight group including members from CAMHS, Public Health, Education, Safeguarding, Frimley ICB
- 

# Project elements



# Launch webinar & learning network

- 84 professionals attended launch webinar
- Learning network
  - place to share insights and information related to the project
  - Provide learning opportunities for professionals
    - 111 professionals signed up to receive updates
    - 67 attended Mental Health Awareness week webinar on self-harm by A/Prof Rohan Borschmann (University of Oxford)
- Workforce survey
  - form a deeper understanding of professionals' knowledge and understand of self-harm and gauge their confidence about how best to offer support
    - 89 completed workforce survey



# Reflective sessions

- Delivery of a series of face to face reflective learning sessions for the CYP workforce
  - Cross-discipline
  - Develop a shared understanding of self-harm
  - Clarify respective roles of the range of CYP workforce involved
  - Network
  - To promote knowledge equity
    - 22 professionals attended across 5 sessions
    - Representation from CAMHS, Education, Early Help, Children's Social Care, Voluntary Sector, Safeguarding, Frimley ICB



# NICE Guidelines Baseline Assessment

- To help us to evaluate current practice in line with the national recommendation and plan and future activity to meet the recommendations
- Task and Finish group consisting of colleagues from CSC, Early Help, CAMHS, Ambulance, Acute, Education,
- Final meeting 12 June to discuss completed plan





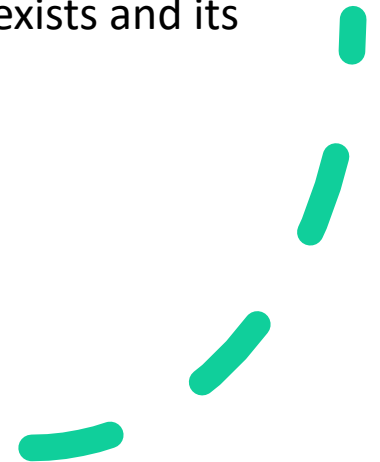
Next steps -  
Understanding  
the data &  
Review of grey  
literature/resources/services

### Data

- Analysis of published data and insights from Oxwell survey
- Build a local picture

### Review grey literature

- Develop a coherent picture of training, guidance documents/toolkits, services and resources relating to self-harm that are on offer locally and beyond
- Support an understanding of what exists and its impacts





## Final Report

- Due end of July 2023
- Learning and insights will inform the co-design of a holistic and place-based response to self-harm which will aim to:
  - Build knowledge and understanding of self-harm amongst the CYP workforce
  - Develop confidence in those professionals/volunteers about how to best provide support
  - Clarify respective roles of the range of professional involved
  - Help young people who self-harm to access appropriate support and information

# For more information

- For more information and overview of the project visit:

<https://www.patientsafetyoxford.org/clinical-safety-programmes/mental-health/bracknell-forest-self-harm-workforce-project/>

- Or to sign up to the learning network visit

[https://forms.office.com/Pages/ResponsePage.aspx?id=utWcKggkR0OEAHxdiMJ3-53XS\\_FrDhtHnI-MP73HvgVUMlo4WjBTWFZNTTIMWDBOM1dEOVIVRVRZQy4u](https://forms.office.com/Pages/ResponsePage.aspx?id=utWcKggkR0OEAHxdiMJ3-53XS_FrDhtHnI-MP73HvgVUMlo4WjBTWFZNTTIMWDBOM1dEOVIVRVRZQy4u)

- Or contact Katherine Davies (Public Health Programme Officer):  
[Katherine.davies@bracknell-forest.gov.uk](mailto:Katherine.davies@bracknell-forest.gov.uk)